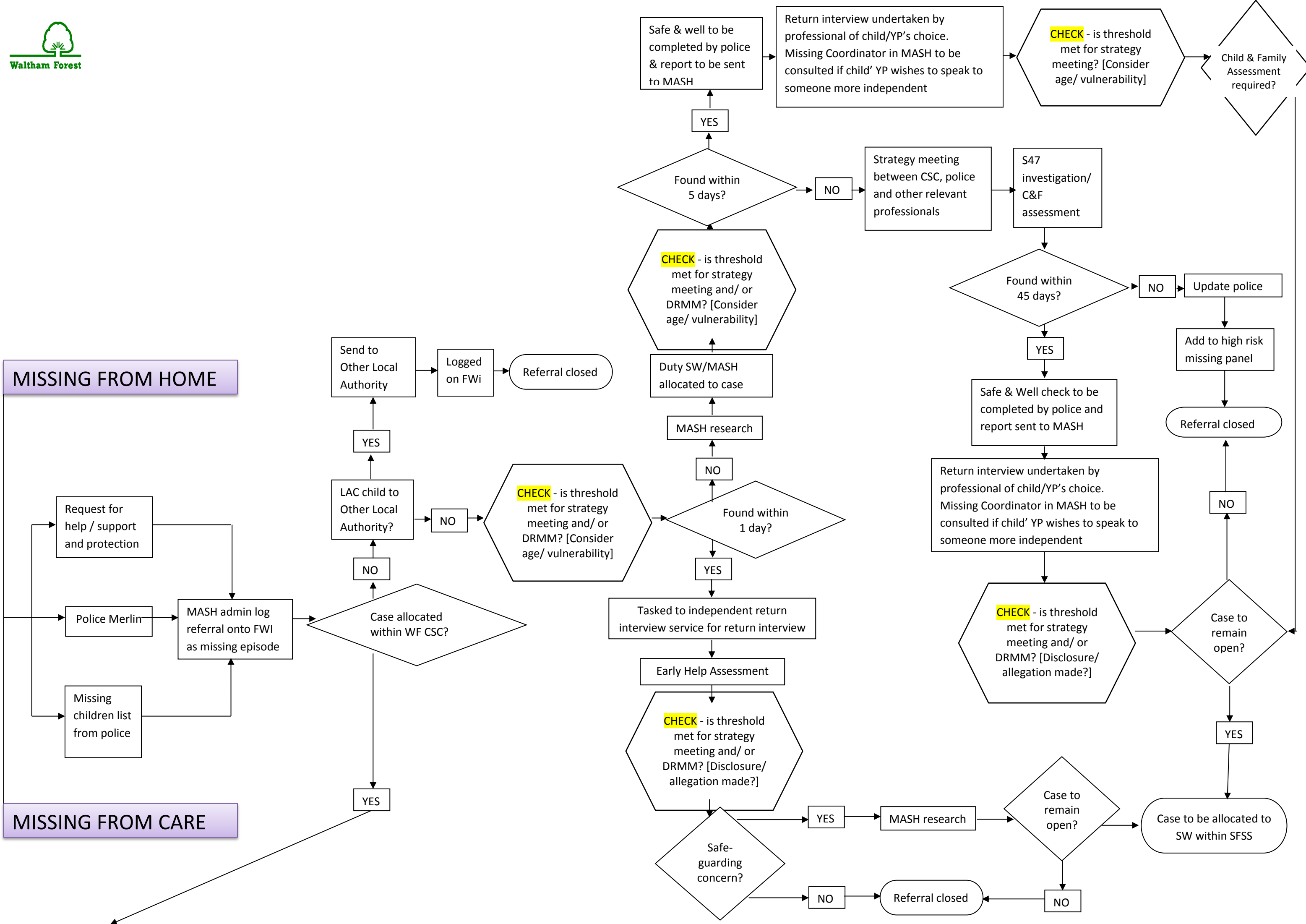
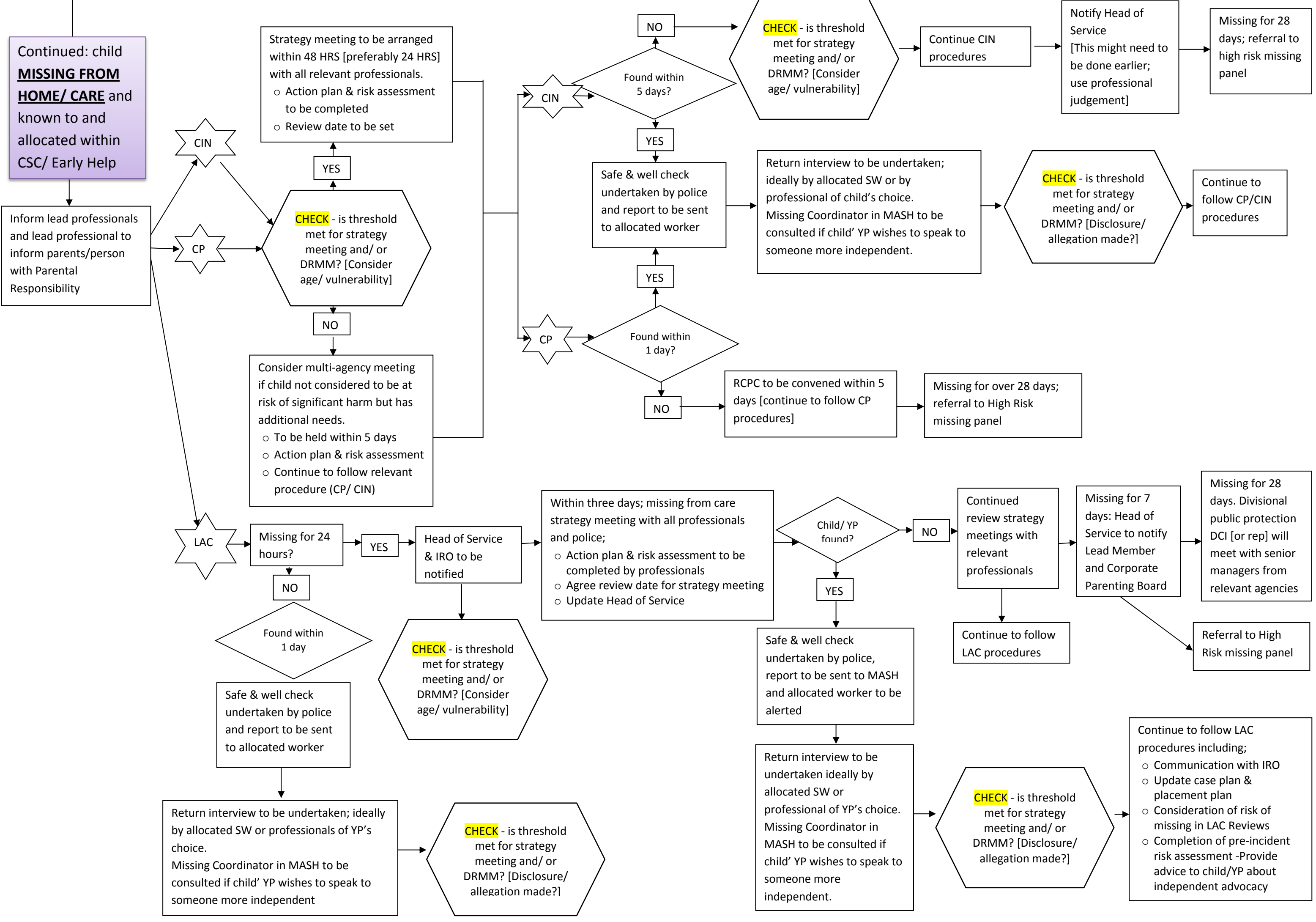




MISSING FROM HOME

MISSING FROM CARE





Continued: child **MISSING FROM HOME/ CARE** and known to and allocated within CSC/ Early Help

Inform lead professionals and lead professional to inform parents/person with Parental Responsibility

CIN

CP

LAC

Strategy meeting to be arranged within 48 HRS [preferably 24 HRS] with all relevant professionals.
o Action plan & risk assessment to be completed
o Review date to be set

CHECK - is threshold met for strategy meeting and/ or DRMM? [Consider age/ vulnerability]

Consider multi-agency meeting if child not considered to be at risk of significant harm but has additional needs.
o To be held within 5 days
o Action plan & risk assessment
o Continue to follow relevant procedure (CP/ CIN)

CIN

CP

NO

YES

YES

NO

NO

YES

NO

YES

NO

CHECK - is threshold met for strategy meeting and/ or DRMM? [Consider age/ vulnerability]

Continue CIN procedures

Notify Head of Service [This might need to be done earlier; use professional judgement]

Missing for 28 days; referral to high risk missing panel

Safe & well check undertaken by police and report to be sent to allocated worker

Return interview to be undertaken; ideally by allocated SW or by professional of child's choice. Missing Coordinator in MASH to be consulted if child' YP wishes to speak to someone more independent.

CHECK - is threshold met for strategy meeting and/ or DRMM? [Disclosure/ allegation made?]

Continue to follow CP/CIN procedures

Found within 1 day?

RCPC to be convened within 5 days [continue to follow CP procedures]

Missing for over 28 days; referral to High Risk missing panel

Within three days; missing from care strategy meeting with all professionals and police;
o Action plan & risk assessment to be completed by professionals
o Agree review date for strategy meeting
o Update Head of Service

Child/ YP found?

NO

YES

Continued review strategy meetings with relevant professionals

Missing for 7 days: Head of Service to notify Lead Member and Corporate Parenting Board

Missing for 28 days. Divisional public protection DCI [or rep] will meet with senior managers from relevant agencies

Found within 1 day

Safe & well check undertaken by police and report to be sent to allocated worker

CHECK - is threshold met for strategy meeting and/ or DRMM? [Consider age/ vulnerability]

Safe & well check undertaken by police, report to be sent to MASH and allocated worker to be alerted

Continue to follow LAC procedures

Referral to High Risk missing panel

Return interview to be undertaken; ideally by allocated SW or professionals of YP's choice. Missing Coordinator in MASH to be consulted if child' YP wishes to speak to someone more independent

CHECK - is threshold met for strategy meeting and/ or DRMM? [Disclosure/ allegation made?]

Return interview to be undertaken ideally by allocated SW or professional of YP's choice. Missing Coordinator in MASH to be consulted if child' YP wishes to speak to someone more independent.

CHECK - is threshold met for strategy meeting and/ or DRMM? [Disclosure/ allegation made?]

Continue to follow LAC procedures including;
o Communication with IRO
o Update case plan & placement plan
o Consideration of risk of missing in LAC Reviews
o Completion of pre-incident risk assessment -Provide advice to child/YP about independent advocacy

MISSING FROM EDUCATION

